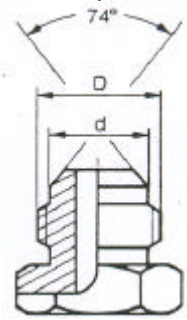
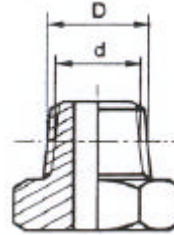
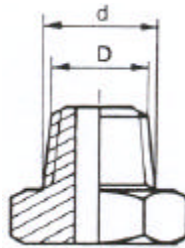
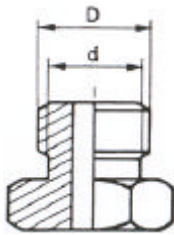


Adattatori

Per oleodinamica

Tipologia	Pagina	Tipologia	Pagina
Nipples gas	5	Vite forata metrica	14
Nipples metrico	5	Vite forata doppia metrica	15
Nipples conico-conico	5	Occhio saldare gas	15
Nipples conico-cilindrico	6	Occhio saldare metrico	15
Nipples gas-npt	6	Occhio filettato metrico/gas	15
Nipples M-F girevole	6	Occhio filettato metrico	16
Nipples ridotto M-F girevole	6	Curva 90° M-F girevole gas	16
Adattatore F-F girevole	7	Curva 90° M-F girevole metrica	16
Adattatore F-F girevole spinato	7	Curva 45° M-F girevole gas	16
Nipples passaparete	7	Curva 45° M-F girevole metrica	16
Prolunga M-M	7	Curva 90° F-F girevole gas	17
Prolunga F-F	8	Curva 90° F-F girevole metrica	17
Nipples ridotto gas	8	Curva 45° F-F girevole gas	17
Nipples ridotto gas-metrico	9	Curva 45° F-F girevole metrica	17
Nipples ridotto metrico	9	Nipples Jic-gas	18
Tappo di riduzione M-F	10	Adattatore "T" M/F/M	18
Prolunga di riduzione M-F	10	Adattatore "T" M/M/F	18
Nipples saldare gas	11	Nipples 90° con-cil	18
Nipples saldare metrico	11	Adattatore 90° M-F gas	19
Borchia saldare	11	Adattatore 90° M-F gas conico	19
Tappo M gas	12	Adattatore 90° F-F fissa	19
Tappo M metrico	12	Adattatore "T" M/M/M gas	19
Tappo F gas	12	Adattatore "T" F/F/F girevole gas	20
Prolunga M-F gas	13	Adattatore "T" F/F/F fissa gas	20
Prolunga M-F metrica	13	Adattatore croce F/F/F/F	20
Borchia saldare gas	13	Semiflange SAE 3000/6000	21
Borchia saldare metrica	14	Flange filettate SAE 3000/6000	22
Vite forata gas	14	Flange saldare SAE 3000/6000	23
Vite forata doppia gas	14		

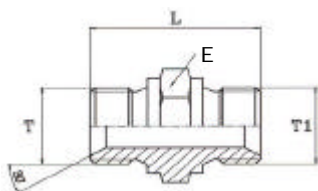
PRINCIPALI TIPI DI FILETTATURE DEI RACCORDI

METRICO**GAS CILINDRICO****GAS CONICO****NPT (ASA B2.1)****UNF e UN (ASA B1.1)**

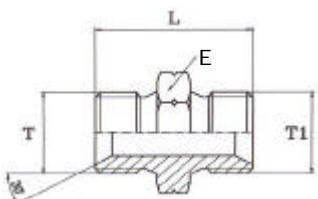
M 8x1	8,00	6,70	G 1/8-28	9,73	8,60	Gc 1/8-28	9,73	8,60	1/8-27	9,98	10,29	7/16 -20UNF	11,07	10,00
M10x1	10,00	8,70	G 1/4-19	13,16	11,50	Gc 1/4-19	13,16	11,50	1/4-18	13,26	13,72	1/2 -20UNF	12,70	11,60
M12x1,5	12,00	10,05	G 3/8-19	16,66	14,90	Gc 3/8-18	16,66	14,90	3/8-18	16,68	17,15	9/16 -18UNF	14,25	13,00
M14x1,5	14,00	12,05	G 1/2-14	20,96	18,60	Gc 1/2-14	20,96	18,60	1/2-14	20,71	21,34	3/4 -16UNF	19,00	17,60
M16x1,5	16,00	14,05	G 5/8-14	22,91	20,60	Gc 3/4-14	26,44	24,10	3/4-14	26,03	26,67	7/8 -14UNF	22,17	20,50
M18x1,5	18,00	16,05	G 3/4-14	26,44	24,10	Gc 1 -11	33,25	30,30	1 1/2-11	32,59	33,40	1 1/16-12UN	26,95	25,00
M22x1,5	22,00	20,05	G 1 -11	33,25	30,30	Gc1 1/4-11	41,91	38,90	1 1/4-11,5	41,31	42,16	1 5/16-12UN	33,30	31,30
M26x1,5	26,00	24,05	G1 1/4-11	41,91	38,90	Gc1 1/2-11	47,80	44,90	1 1/2-11,5	47,39	48,26	1 5/8 -12UN	41,22	39,20
M30x1,5	30,00	28,05	G1 1/2-11	47,80	44,90	Gc 2 -11	59,61	56,70	2 1/2-11	59,40	60,33	1 7/8 -12UN	47,57	45,60
M38x1,5	38,00	36,05	G1 3/4-11	53,75	50,80	Gc2 1/2-11	75,18	72,20	2 1/2-8	71,62	73,03	2 1/2 -12UN	63,45	61,50
M45x1,5	45,00	43,05	G 2 -11	59,61	56,70									
M52x1,5	52,00	50,05	G2 1/4-11	65,72	62,80									
M65x2	65,00	62,40												

NIPPLES DI GIUNZIONE GAS

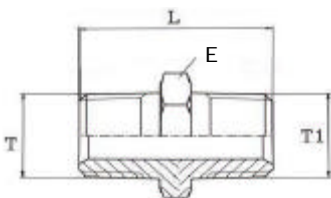
T	T1	L	L1	E	E1	D	d	P max	Codice
1/8	1/8	25,0		14				425	
1/4	1/4	29,0		19				425	
3/8	3/8	34,0		22				400	
1/2	1/2	37,5		27				350	
5/8	5/8	42,0		30				300	
3/4	3/4	42,0		32				250	
1	1	51,0		41				250	
1.1/4	1.1/4	57,0		50				200	
1.1/2	1.1/2	60,0		55				175	
2	2	71,0		70				150	
2.1/2	2.1/2	65,0		85				150	
3	3	65,0		100				100	

**NIPPLES DI GIUNZIONE METRICO**

T	T1	L	L1	E	E1	D	d	P max	Codice
M10X1	M10X1	25,0		14				425	
M12X1.5	M12X1.5	29,0		17				425	
M14X1.5	M14X1.5	31,0		19				400	
M16X1.5	M16X1.5	35,0		22				350	
M18X1.5	M18X1.5	36,0		24				350	
M20X1.5	M20X1.5	38,0		27				350	
M22X1.5	M22X1.5	38,0		27				350	
M24X1.5	M24X1.5	36,0		30				250	
M26X1.5	M26X1.5	42,0		32				250	
M30X1,5	M30X1,5	41,0		38				200	

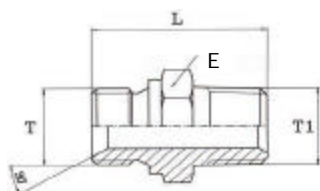
**NIPPLES DI GIUNZIONE CONICO-CONICO**

1/8	1/8	25,0		12				350	
1/8	1/4	30,5		14				350	
1/4	1/4	35,0		14				350	
1/4	3/8	35,0		17				250	
3/8	3/8	35,0		17				250	
3/8	1/2	40,5		22				225	
1/2	1/2	45,0		22				225	
1/2	3/4	47,0		27				200	
3/4	3/4	47,0		27				200	
3/4	1	53,0		36				160	
1	1	58,0		36				160	
1.1/4	1.1/4	62,0		46				160	
1.1/2	1.1/2	66,0		50				160	
2	2	69,0		65				100	

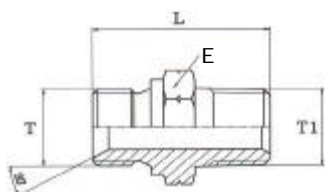


NIPPLES DI GIUNZIONE CONICO-CILINDRICO

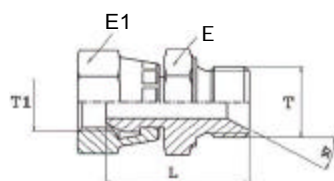
T	T1	L	L1	E	E1	D	d	P max	Codice
1/8	1/8	26,5		12				425	
1/4	1/4	32,0		17				425	
3/8	3/8	35,0		19				400	
3/8	3/8	35,5		22				400	
1/2	1/2	42,5		24				300	
3/4	3/4	46,0		30				250	
1	1	55,0		36				250	
1.1/4	1.1/4	60,0		50				200	
1.1/2	1.1/2	61,5		50				175	
2	2	68,0		65				150	

**NIPPLES DI GIUNZIONE GAS-NPT**

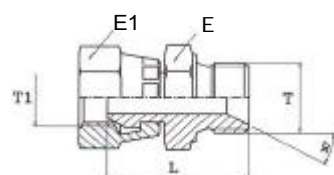
T	T1	L	L1	E	E1	D	d	P max	Codice
1/8-27	1/8-27	27,5		12				425	
1/4	1/4-18	32,0		15				425	
3/8	3/8-18	32,5		17				400	
1/2	1/2	42,5		24				300	
1/2	1/2	44,0		27				300	
3/4	3/4	45,0		27				250	
1	1	55,0		36				200	
1-1/4-11	1.1/4	58,0		45				200	
1.1/2	1.1/2	60,5		50				175	
2	2	68,2		65				150	

T1 NPT**ADATTATORE M/F GIREVOLE**

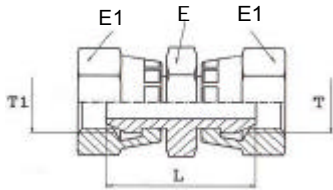
T	T1	L	L1	E	E1	D	d	P max	Codice
1/8	1/8	24,0		14	14			425	
1/4	1/4	29,0		19	19			425	
3/8	3/8	33,5		22	22			400	
1/2	1/2	39,0		27	27			350	
3/4	3/4	44,0		32	32			250	
1	1	45,5		41	38			250	

**ADATTATORE RIDOTTO M/F GIREVOLE**

T	T1	L	L1	E	E1	D	d	P max	Codice
1/4	3/8	33,0		19	22			425	
3/8	1/4	33,0		22	19			425	
3/8	1/2	35,5		22	27			400	
1/2	3/8	38,0		27	22			350	
1/2	3/4	42,5		27	32			250	
3/4	1/2	41,0		32	27			250	
3/4	1	45,5		32	38			200	
1	3/4	47,5		41	32			175	

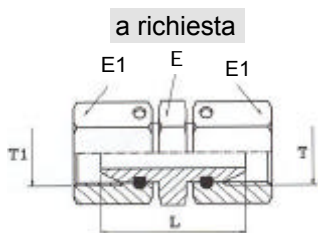


ADATTATORE F/F GIREVOLE



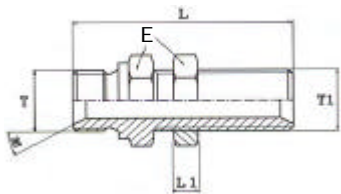
T	T1	L	L1	E	E1	D	d	P max	Codice
1/8	1/8	25,0		14	14			425	
1/4	1/4	27,5		19	19			425	
3/8	3/8	33,0		22	22			400	
1/2	1/2	37,0		27	27			350	
3/4	3/4	43,5		32	32			250	
1	1	42,5		41	38			250	

ADATTATORE F/F GIREVOLE DADO SPINATO



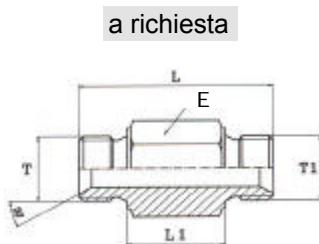
T	T1	L	L1	E	E1	D	d	P max	Codice
1/4	1/4	30,0		19	19			425	
3/8	3/8	33,0		22	22			400	
1/2	1/2	36,0		27	27			350	
3/4	3/4	44,0		32	32			250	
1	1	46,0		38	38			250	
1.1/4	1.1/4	52,0		50	50			200	
1.1/2	1.1/2	57,0		55	55			175	
2	2	54,0		70	70			150	

NIPPLES PASSAPARETE



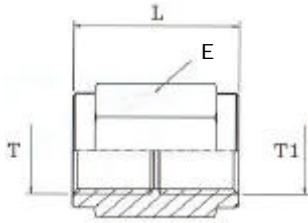
T	T1	L	L1	E	E1	D	d	P max	Codice
1/4	1/4	45	7,0	19				425	
3/8	3/8	54	8,0	22				400	
1/2	1/2	58,5	9,0	27				300	
3/4	3/4	65	10,0	32				250	
1	1	74	11,0	41				200	
1.1/4	1.1/4	79	13,0	50				200	

PROLUNGA M/M



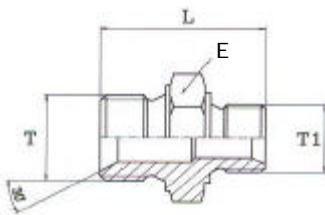
T	T1	L	L1	E	E1	D	d	P max	Codice
1/4	1/4	51	29,0	19				300	
1/4	1/4	57	35,0	19				300	
3/8	3/8	50	25,0	22				250	
3/8	3/8	60	35,0	22				250	
1/2	1/2	56	28,0	27				200	
1/2	1/2	58	30,0	27				200	
3/4	3/4	72	40,0	32				150	
3/4	3/4	77	45,0	32				150	
1	1	85	45,0	41				150	

PROLUNGA F/F GAS



T	T1	L	L1	E	E1	D	d	P max	Codice
1/8	1/8	30,0		14				250	
1/4	1/4	35,0		19				300	
3/8	3/8	40,0		22				300	
1/2	1/2	34,0		27				250	
3/4	3/4	50,0		32				200	
1	1	43,0		41				200	
1.1/4	1.1/4	47,0		50				150	
1.1/2	1.1/2	70,0		55				150	
2	2	57,0		70				150	

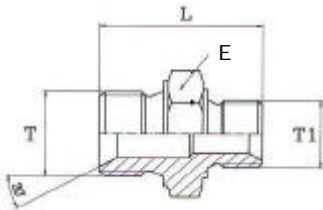
NIPPLES DI RIDUZIONE GAS



T	T1	L	L1	E	E1	D	d	P max	Codice
1/4	1/8	27,5		19				350	
3/8	1/8	29,5		22				350	
3/8	1/4	32,0		22				350	
1/2	1/4	34,5		27				350	
1/2	3/8	35,5		27				350	
5/8	1/2	40,0		30				300	
3/4	1/4	38,0		32				250	
3/4	3/8	38,0		32				250	
3/4	1/2	40,0		32				250	
3/4	5/8	43,0		32				250	
1	3/8	44,5		41				200	
1	1/2	47,0		41				200	
1	3/4	49,0		41				200	
1.1/4	1/2	51,0		50				200	
1.1/4	3/4	53,0		50				200	
1.1/4	1	55,0		50				200	
1.1/2	3/4	54,0		55				175	
1.1/2	1	56,0		55				175	
1.1/2	1.1/4	58,0		55				175	
2	1.1/4	65,5		70				150	
2	1.1/2	67,5		70				150	

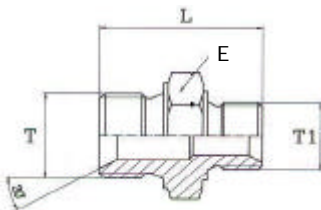
NIPPLES DI RIDUZIONE GAS-METRICO

T	T1	L	L1	E	E1	D	d	P max	Codice
1/4	M10X1	28,0		19				425	
1/4	M12X1.5	29,0		19				425	
1/4	M14X1.5	30,0		19				425	
1/4	M16X1.5	33,0		22				300	
1/4	M18X1.5	33,0		24				300	
3/8	M14X1.5	33,0		22				300	
3/8	M16X1.5	35,0		22				300	
3/8	M18X1.5	35,0		24				300	
3/8	M22X1.5	36,5		27				250	
1/2	M14X1.5	35,5		27				250	
1/2	M16X1.5	37,5		27				250	
1/2	M18X1.5	36,5		27				250	
1/2	M22X1.5	38,0		27				250	
3/4	M18X1.5	42,0		32				200	
3/4	M22X1.5	42,0		32				200	
3/4	M26X1.5	43,0		32				200	
1	M26X1.5	42,5		41				200	



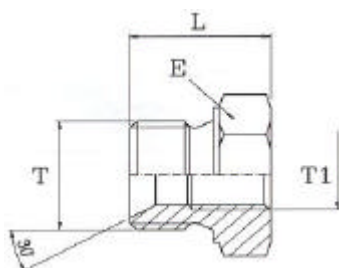
NIPPLES DI RIDUZIONE METRICO-METRICO

T	T1	L	L1	E	E1	D	d	P max	Codice
M14X1.5	M10X1	28,5		19				350	
M14X1.5	M12X1.5	30,0		19				350	
M16X1.5	M12X1.5	31,0		22				350	
M16X1.5	M14X1.5	31,0		22				350	
M18X1.5	M14X1.5	34,0		24				350	
M18X1.5	M16X1.5	36,0		24				350	
M22X1.5	M16X1.5	37,0		27				350	
M22X1.5	M18X1.5	37,5		27				250	
M26X1.5	M22X1.5	38,0		32				200	



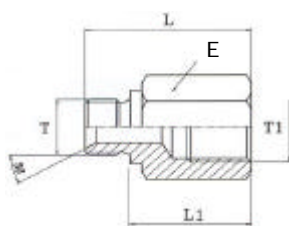
TAPPO DI RIDUZIONE M/F

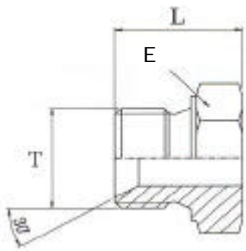
T	T1	L	L1	E	E1	D	d	P max	Codice
1/4	1/8	18,0		19				175	
3/8	1/8	21,0		22				175	
3/8	1/4	21,0		22				175	
1/2	1/4	23,5		27				175	
1/2	3/8	23,5		27				175	
3/4	3/8	27,0		32				175	
3/4	1/2	27,0		32				175	
1	3/8	30,0		41				150	
1	1/2	30,0		41				150	
1	3/4	30,0		41				150	
1.1/4	1/2	33,5		50				125	
1.1/4	3/4	33,5		50				125	
1.1/4	1	33,5		50				125	
1.1/2	3/4	35,5		55				125	
1.1/2	1	35,5		55				125	
1.1/2	1.1/4	35,5		55				125	
2	1.1/4	42,5		70				100	
2	1.1/2	42,5		70				100	



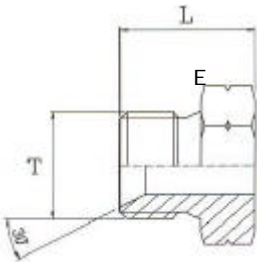
PROLUNGA DI RIDUZIONE M/F

T	T1	L	L1	E	E1	D	d	P max	Codice
1/8	1/4	29	19,5	19				300	
1/4	1/8	30	19,5	19				300	
1/4	3/8	33	22	22				300	
1/4	1/2	37	26	27				300	
3/8	1/4	35	22	22				250	
3/8	1/2	39	26	27				250	
1/2	1/4	36	22	27				200	
1/2	3/8	36	22	27				200	
1/2	3/4	42	29	32				200	
1/2	1	45	31	41				200	
3/4	1/4	40	23	32				200	
3/4	3/8	40	23	32				200	
3/4	1/2	43	26	32				200	
3/4	1	50	33	41				200	
3/4	1.1/4	48	32	50				200	
1	3/4	50	31	41				200	
1	1.1/4	51	32	50				200	
1	1.1/2	52	32	55				200	
1.1/4	3/4	53,5	32	50				150	
1.1/4	1	53,5	32	50				150	
1.1/4	1.1/2	53,5	32	55				150	
1.1/2	1	55	33	55				150	
1.1/2	1.1/4	55	33	55				150	
1.1/2	2	65	43	70				150	
2	1.1/4	68	43	70				150	
2	1.1/2	68	43	70				150	



NIPPLES A SALDARE GAS

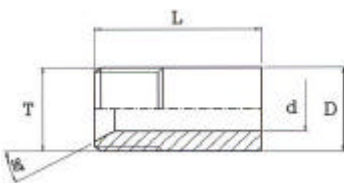
T	T1	L	L1	E	E1	D	d	P max	Codice
1/8		15,5		14				425	
1/4		18,0		19				425	
3/8		21,0		22				400	
1/2		24,0		27				350	
3/4		27,0		32				250	
1		30,0		41				250	
1.1/4		34,5		50				200	
1.1/2		35,5		55				175	
2		41,0		70				150	

NIPPLES A SALDARE METRICO

T	T1	L	L1	E	E1	D	d	P max	Codice
M10X1		14,0		14				425	
M12X1,5		18,0		17				425	
M14X1,5		18,0		19				425	
M16X1,5		22,0		22				400	
M18X1,5		22,0		24				400	
M20X1,5		23,0		25				350	
M22X1,5		23,0		27				350	
M24X1,5		26,0		30				300	
M26X1,5		26,0		32				250	

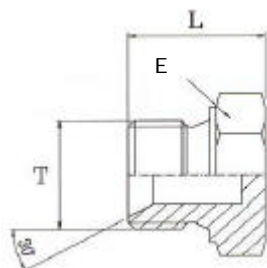
BORCHIA A SALDARE LUNGA

a richiesta



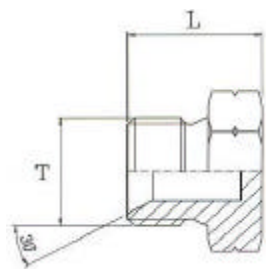
T	T1	L	L1	E	E1	D	d	P max	Codice
1/8		20,0				10	5,0	300	
1/4		25,0				14	6,5	300	
3/8		35,0				17	9,0	250	
1/2		35,0				21	12,0	250	
3/4		40,5				30	15,0	200	
1		41,0				33	22,0	200	
1.1/4		45,0				43	28,0	175	
1.1/2		50,5				48	34,0	150	
2		55,0				60	43,0	150	

TAPPO MASCHIO GAS



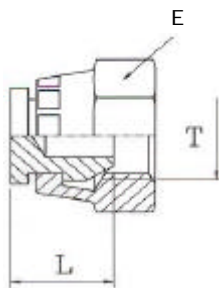
T	T1	L	L1	E	E1	D	d	P max	Codice
1/8		14,5		14				425	
1/4		18,0		19				425	
3/8		21,0		22				400	
1/2		23,5		27				350	
5/8		26,0		30				300	
3/4		27,0		32				250	
1		31,0		41				250	
1.1/4		33,5		50				200	
1.1/2		36,0		55				175	
2		41,0		70				150	
2.1/2		40,0		85				150	

TAPPO MASCHIO METRICO



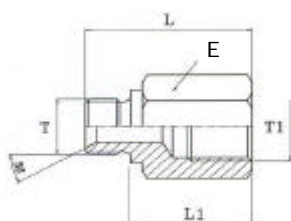
T	T1	L	L1	E	E1	D	d	P max	Codice
M10X1		14,5		14				425	
M12X1,5		19,0		17				425	
M14X1,5		18,0		19				425	
M16X1,5		21,0		22				400	
M18X1,5		22,0		24				400	
M20X1,5		22,0		27				350	
M22X1,5		22,0		27				350	
M24X1,5		22,0		30				300	
M26X1,5		24,0		32				250	
M30X1,5		28,0		36				200	

TAPPO FEMMINA GAS



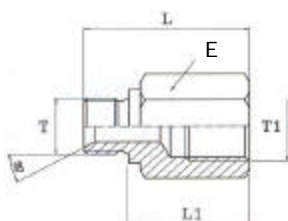
T	T1	L	L1	E	E1	D	d	P max	Codice
1/8		11,0		14				425	
1/4		13,5		19				425	
3/8		15,0		22				400	
1/2		17,5		27				350	
5/8		16,0		30				300	
3/4		17,5		32				250	
1		19,0		38				250	
1.1/4		23,0		50				200	
1.1/2		23,5		55				175	
2		25,6		70				150	

PROLUNGA M/F GAS



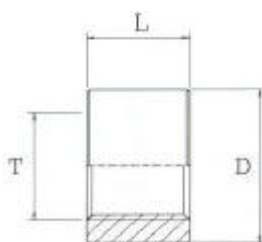
T	T1	L	L1	E	E1	D	d	P max	Codice
1/8	1/8	25,0	17,0	14				300	
1/8	1/8	50,0	42,0	14				300	
1/4	1/4	30,0	19,0	19				300	
1/4	1/4	42,0	31,0	19				300	
3/8	3/8	35,0	22,0	22				300	
3/8	3/8	54,0	41,0	22				300	
1/2	1/2	45,0	31,0	27				250	
1/2	1/2	60,0	46,0	27				250	
3/4	3/4	47,0	31,0	32				200	
3/4	3/4	75,0	58,0	32				200	
1	1	50,0	32,0	41				200	
1	1	90,0	71,0	41				200	
1.1/4	1.1/4	62,0	42,0	50				150	
1.1/4	1.1/4	92,0	72,0	50				150	
1.1/2	1.1/2	62,0	40,0	55				150	
1.1/2	1.1/2	96,0	74,0	55				150	
2	2	110,0	85,0	70				150	
2	2	180,0	155,0	70				150	

PROLUNGA M/F METRICA

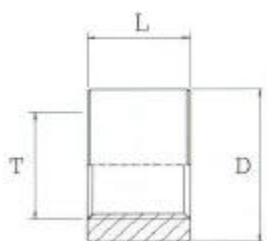


T	T1	L	L1	E	E1	D	d	P max	Codice
M12x1,5	M12x1,5	30,0	19,0	17				300	
M12x1,5	M12x1,5	55,0	44,0	17				300	
M14x1,5	M14x1,5	48,0	37,0	19				300	
M14x1,5	M14x1,5	60,0	49,0	19				300	
M16x1,5	M16x1,5	35,0	21,5	22				300	
M16x1,5	M16x1,5	54,0	40,5	22				300	
M18x1,5	M18x1,5	33,0	19,5	24				300	
M18x1,5	M18x1,5	60,0	46,5	24				300	
M20x1,5	M20x1,5	60,0	45,5	27				250	
M22x1,5	M22x1,5	60,0	45,5	27				250	

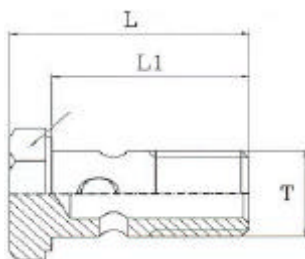
BORCHIA A SALDARE GAS



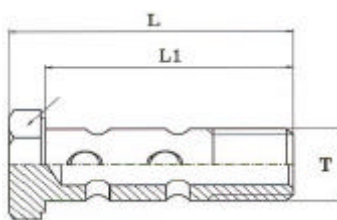
T	T1	L	L1	E	E1	D	d	P max	Codice
1/8		14,0				20		425	
1/4		16,0				22		425	
3/8		17,0				26		400	
1/2		18,0				30		350	
5/8		20,0				32		300	
3/4		20,0				38		250	
1		25,0				46		250	
1.1/4		26,0				56		200	
1.1/2		30,0				62		175	
2		30,0				70		150	

BORCHIA A SALDARE METRICA

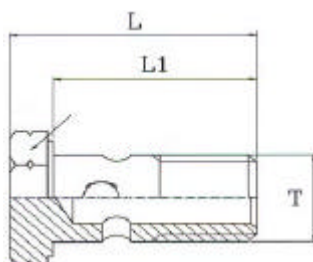
T	T1	L	L1	E	E1	D	d	P max	Codice
10X1		14,0				20		425	
12X1,5		16,0				22		425	
14X1,5		16,0				22		425	
16X1,5		17,0				26		400	
18X1,5		18,0				28		400	
20X1,5		18,0				30		300	
22X1,5		18,0				32		300	
24X1,5		20,0				36		250	
26X1,5		20,0				38		250	

VITE FORATA GAS

T	T1	L	L1	E	E1	D	d	P max	Codice
1/8		24,0	19,5	14				300	
1/4		34,5	28,5	19				300	
3/8		40,5	33,0	22				300	
1/2		46,0	38,0	27				250	
5/8		50,0	42,0	30				200	
3/4		56,0	47,0	32				200	
1		69,0	58,0	41				150	

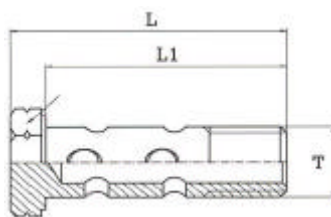
VITE FORATA DOPPIA GAS

T	T1	L	L1	E	E1	D	d	P max	Codice
1/8		36,5	30,5	14				200	
1/4		49,0	43,0	19				200	
3/8		57,0	49,5	22				200	
1/2		72,0	63,0	27				200	
3/4		86,5	77,5	32				150	
1		108,5	97,5	41				150	

VITE FORATA METRICA

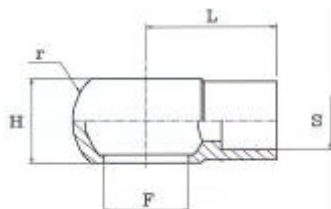
T	T1	L	L1	E	E1	D	d	P max	Codice
M10X1		24,0	19,5	14				300	
M12X1.5		31,5	25,5	17				300	
M14X1.5		34,0	28,5	19				300	
M16X1.5		40,5	33,0	22				300	
M18X1.5		44,5	36,5	24				250	
M22X1.5		46,5	38,5	27				200	
M26X1.5		56,0	45,5	32				200	

VITE FORATA DOPPIA METRICA



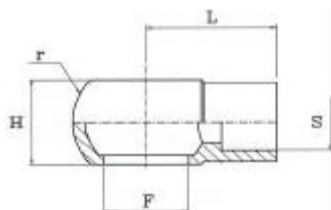
T	T1	L	L1	E	E1	D	d	P max	Codice
M10X1		36,5	30,5	14				200	
M12X1,5		48,0	42,0	17				200	
M14X1,5		49,0	43,0	19				200	
M16X1,5		56,0	49,0	22				200	
M18X1,5		65,0	54,0	24				200	
M22X1,5		72,0	64,0	27				200	

OCCHIO SALDARE GAS



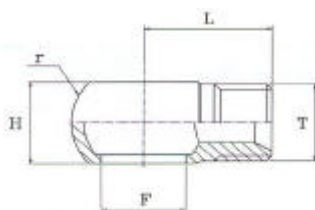
T	T1	L	L1	E	E1	D	d	P max	Codice
1/4	6	24,0	14		24			300	
1/4	8	24,0	14		24			300	
1/4	10	24,0	14		24			300	
3/8	10	28,0	18		28			300	
3/8	12	28,0	18		28			300	
1/2	15	32,0	22		35			250	
1/2	16	32,0	22		35			250	
3/4	20	40,0	29		45			200	
1	27	57,0	37		58			150	

OCCHIO SALDARE METRICO

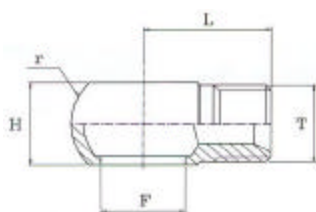


T	T1	L	L1	E	E1	D	d	P max	Codice
14	10	24,0	14		24			300	
16	12	28,0	18		28			300	
18	12	29,0	20		32			250	
18	15	29,0	20		32			250	
22	16	32,0	22		35			250	
26	20	40,0	29		45			150	

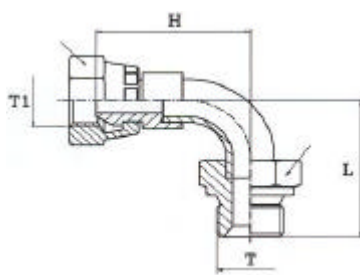
OCCHIO FILETTATO GAS GAS/METRICO



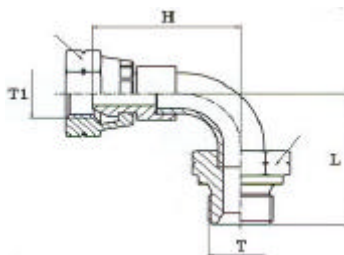
T	T1	L	L1	E	E1	D	d	P max	Codice
1/4	1/4	25,0	14		24			250	
1/4	M14X1.5	25,0	14		24			250	
3/8	1/4	25,0	18		28			250	
3/8	3/8	28,0	18		28			250	
3/8	M18X1.5	28,0	18		28			250	
1/2	3/8	28,0	22		35			250	
1/2	1/2	28,0	22		35			250	
3/4	3/4	40,0	29		45			200	
1	1	44,0	37		60			150	

OCCHIO FILETTATO METRICO

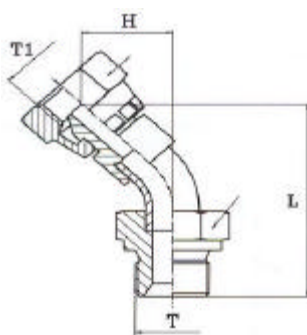
T	T1	L	L1	E	E1	D	d	P max	Codice
14	M14X1.5	24,0	15		24			300	
18	M18X1.5	30,0	20		32			250	
22	M22X1.5	35,0	23		35			200	

CURVA 90° M/F GIREVOLE GAS

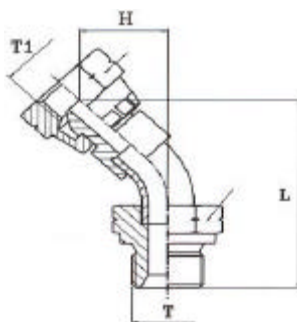
T	T1	L	L1	E	E1	D	d	P max	Codice
1/8	1/8	29,5	29,7	14	14			350	
1/4	1/4	32,0	30,8	19	19			350	
3/8	3/8	37,0	38,5	22	22			300	
1/2	1/2	42,5	45,5	27	27			250	
3/4	3/4	58,0	55,8	32	32			200	
1	1	70,0	65,2	41	38			200	
1.1/4	1.1/4	78,5	74,5	50	50			175	
1.1/2	1.1/2	93,0	89,1	55	55			150	
2	2	121,0	112,9	70	70			150	

CURVA 90° M/F GIREVOLE METRICO

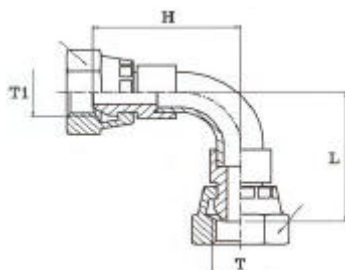
T	T1	L	L1	E	E1	D	d	P max	Codice
M14X1,5	M14X1,5	32,0	30,8	19	19			350	
M16X1,5	M16X1,5	37,0	38,5	22	22			300	
M18X1,5	M18X1,5	37,0	38,5	24	24			300	
M22X1,5	M22X1,5	42,5	45,5	27	27			250	
M26X1,5	M26X1,5	58,0	55,8	32	32			200	

CURVA 45° M/F GIREVOLE GAS

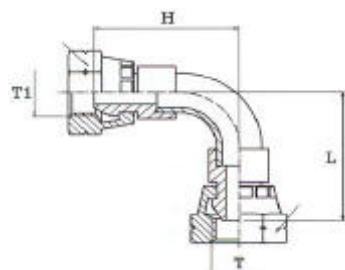
T	T1	L	L1	E	E1	D	d	P max	Codice
1/4	1/4	44,1	17,1	19	19			350	
3/8	3/8	52,0	21,0	22	22			350	
1/2	1/2	53,3	23,8	27	27			300	
3/4	3/4	66,4	25,9	32	32			250	
1	1	85,9	33,9	38	38			200	
1.1/4	1.1/4	81,3	31,8	50	50			200	
1.1/2	1.1/2	101,9	39,9	55	55			175	
2	2	132,2	52,2	70	70			150	

CURVA 45° M/F GIREVOLE METRICO

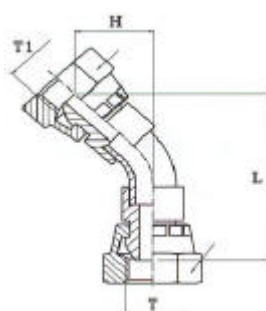
T	T1	L	L1	E	E1	D	d	P max	Codice
M14X1,5	M14X1,5	44,1	17,1	19	19			350	
M16X1,5	M16X1,5	52,0	21,0	22	22			300	
M18X1,5	M18X1,5	52,0	21,0	24	24			300	
M22X1,5	M22X1,5	53,3	23,8	27	27			250	
M26X1,5	M26X1,5	66,4	25,9	32	32			200	

CURVA 90° F/F GIREVOLE GAS

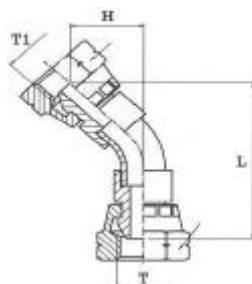
T	T1	L	L1	E	E1	D	d	P _{max}	Codice
1/4	1/4	30,8	30,8	19	19			350	
3/8	3/8	38,5	38,5	22	22			300	
1/2	1/2	45,5	45,5	27	27			250	
3/4	3/4	55,8	55,8	32	32			200	
1	1	65,2	65,2	38	38			200	
1.1/4	1.1/4	74,5	74,5	50	50			175	
1.1/2	1.1/2	89,1	89,1	55	55			150	
2	2	112,9	112,9	70	70			150	

CURVA 90° F/F GIREVOLE METRICO

T	T1	L	L1	E	E1	D	d	P _{max}	Codice
M14X1,5	M14X1,5	30,8	30,8	19	19			350	
M16X1,5	M16X1,5	38,5	38,5	22	22			300	
M18X1,5	M18X1,5	38,5	38,5	24	24			300	
M22X1,5	M22X1,5	45,5	45,5	27	27			250	
M26X1,5	M26X1,5	55,8	55,8	32	32			200	

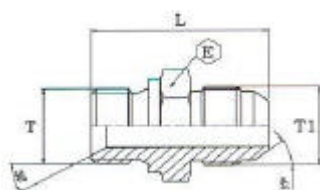
CURVA 45° F/F GIREVOLE GAS

T	T1	L	L1	E	E1	D	d	P _{max}	Codice
1/4	1/4	42,9	17,1	19	19			350	
3/8	3/8	53,5	21,0	22	22			300	
1/2	1/2	56,3	23,8	27	27			250	
3/4	3/4	64,2	25,9	32	32			200	
1	1	81,1	33,9	38	38			200	
1.1/4	1.1/4	77,3	31,8	50	50			175	
1.1/2	1.1/2	98,0	39,9	55	55			150	
2	2	124,1	52,2	70	70			150	

CURVA 45° F/F GIREVOLE METRICO

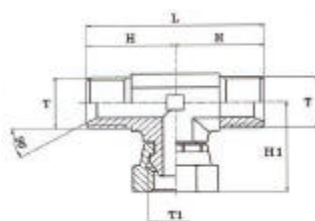
T	T1	L	L1	E	E1	D	d	P _{max}	Codice
M14X1,5	M14X1,5	42,9	17,1	19	19			350	
M16X1,5	M16X1,5	53,5	21,0	22	22			300	
M18X1,5	M18X1,5	53,5	21,0	24	24			300	
M22X1,5	M22X1,5	56,3	23,8	27	27			250	
M26X1,5	M26X1,5	64,2	25,9	32	32			200	

NIPPLES DI GIUNZIONE GAS-JIC



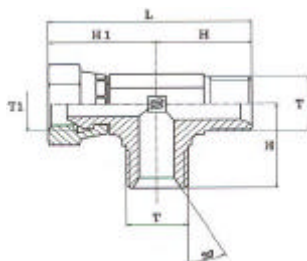
T	T1	L	L1	E	E1	D	d	P max	Codice
1/4	7/16	34,0		19				380	
1/4	9/16	34,0		19				380	
3/8	3/4	38,2		22				340	
1/2	3/4	41,7		27				340	
1/2	7/8	44,3		27				340	
5/8	1.1/16	48,4		28				280	
3/4	1.1/16	50,0		32				280	
1	1.5/16	53,1		41				190	
1.1/4	1.5/8	58,3		50				180	

ADATTATORE A "T" M/F/M GAS GIREVOLE



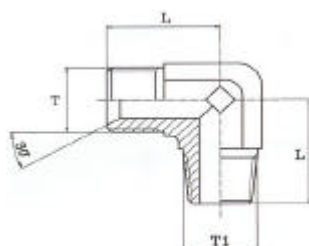
T	T1	L	L1	E	E1	D	d	P max	Codice
1/4	1/4	54,0	27,0	19			29,0	380	
3/8	3/8	63,0	32,0	22			34,0	380	
1/2	1/2	74,0	37,0	27			40,0	340	
3/4	3/4	80,0	40,0	32			46,0	280	
1	1	100,0	50,0	38			52,0	190	
1.1/4	1.1/4	104,0	52,0	50			57,0	190	
1.1/2	1.1/2	120,0	60,0	55			61,0	180	

ADATTATORE A "T" M/M/F GAS GIREVOLE

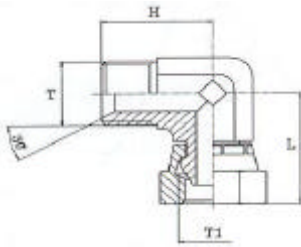


T	T1	L	L1	E	E1	D	d	P max	Codice
1/4	1/4	58,0	27,0	19			31,0	380	
3/8	3/8	66,0	32,0	22			34,0	380	
1/2	1/2	77,0	37,0	27			40,0	340	
3/4	3/4	86,0	40,0	32			46,0	280	
1	1	102,0	50,0	38			52,0	190	
1.1/4	1.1/4	109,0	52,0	50			57,0	190	
1.1/2	1.1/2	120,0	59,0	55			61,0	180	

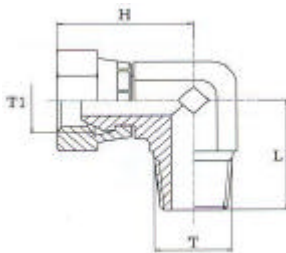
ADATTATORE A 90° M/M GAS CONICO



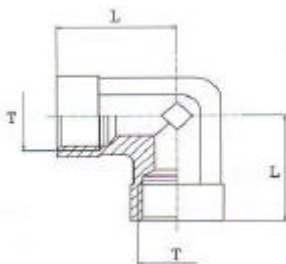
T	T1	L	L1	E	E1	D	d	P max	Codice
1/8	1/8	20,0		12				380	
1/4	1/4	27,0		15				380	
3/8	3/8	30,0		20				380	
1/2	1/2	37,0		24				340	
3/4	3/4	40,0		30				280	
1	1	50,0		35				190	
1.1/4	1.1/4	52,0		45				190	
1.1/2	1.1/2	59,0		50				180	

ADATTATORE A 90° M/F GAS GIREVOLE

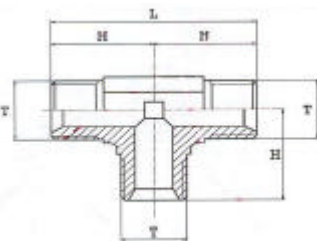
T	T1	L	L1	E	E1	D	d	P max	Codice
1/4	1/4	29,0	27,0	19				380	
3/8	3/8	34,0	32,0	22				380	
1/2	1/2	40,0	37,0	27				340	
3/4	3/4	46,0	40,0	32				280	
1	1	52,0	50,0	38				190	
1.1/4	1.1/4	57,0	52,0	50				190	
1.1/2	1.1/2	64,0	59,0	55				190	

ADATTATORE A 90° M CONICO-FEMMINA GAS GIREVOLE

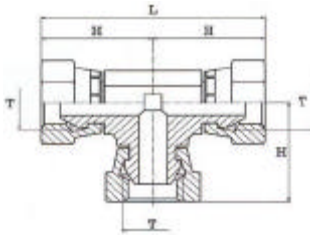
T	T1	L	L1	E	E1	D	d	P max	Codice
1/4	1/4	29,0	27,0	19				300	
3/8	3/8	34,0	32,0	22				300	
1/2	1/2	40,0	36,0	27				250	
3/4	3/4	46,0	40,0	32				200	
1	1	52,0	50,0	38				175	
1.1/4	1.1/4	57,0	52,0	50				150	
1.1/2	1.1/2	64,0	59,0	55				100	

ADATTATORE A 90° F-F FISSA GAS

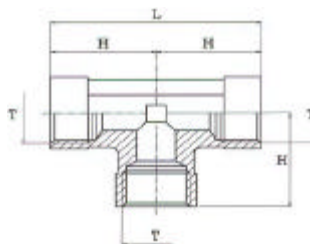
T	T1	L	L1	E	E1	D	d	P max	Codice
1/8		17,0		12				380	
1/4		22,0		15				380	
3/8		26,0		20				380	
1/2		31,0		24				340	
3/4		35,0		30				280	
1		44,0		35				190	
1.1/4		52,0		41				190	

ADATTATORE A "T" M/M/M GAS

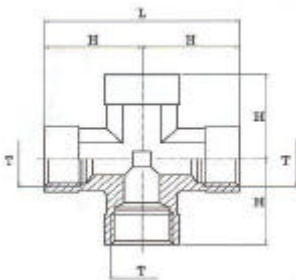
T	T1	L	L1	E	E1	D	d	P max	Codice
1/8		44,0	22,0	12				300	
1/4		54,0	27,0	14				300	
3/8		58,0	29,0	19				300	
1/2		70,0	35,0	22				250	
3/4		86,0	43,0	27				200	
1		100,0	50,0	33				180	
1.1/4		110,0	55,0	41				150	

ADATTATORE A "T" F/F/F GAS GIREVOLI

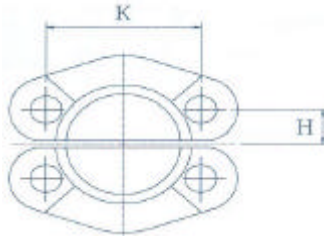
T	T1	L	L1	E	E1	D	d	P _{max}	Codice
1/4		58,0	29,0	19				380	
3/8		68,0	34,0	22				380	
1/2		80,0	40,0	27				340	
3/4		91,0	46,0	32				280	
1		104,0	52,0	38				190	

ADATTATORE A "T" F/F/F GAS FISSA

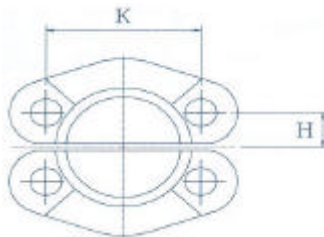
T	T1	L	L1	E	E1	D	d	P _{max}	Codice
1/8		34,0	17,0	12				380	
1/4		44,0	22,0	14				380	
3/8		52,0	26,0	19				380	
1/2		62,0	31,0	22				340	
3/4		70,0	35,0	27				280	
1		88,0	44,0	33				190	
1.1/4		100,0	50,0	41				190	

ADATTATORE A "CROCE" F/F/F/F GAS FISSA

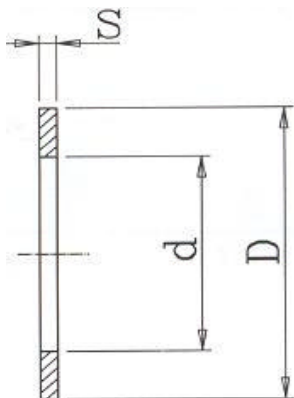
T	T1	L	L1	E	E1	D	d	P _{max}	Codice
1/8		34,0	17,0	12				380	
1/4		44,0	22,0	14				380	
3/8		52,0	26,0	19				380	
1/2		62,0	31,0	22				340	
3/4		70,0	35,0	27				280	

SEMIFLANGE TAGLIATE 3000 psi (210bar)

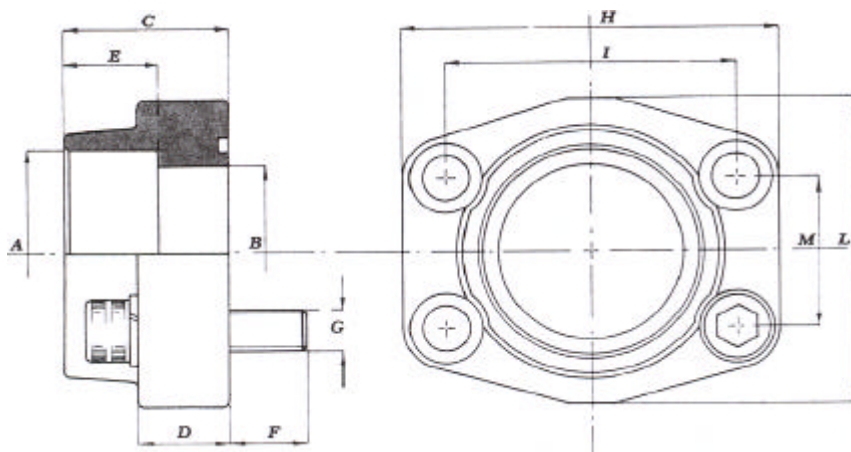
Flangia	Ø Flang.	K	H						Codice
1/2"	30,2	38,10	8,74						
3/4"	38,1	47,63	11,13						
1"	44,5	52,37	13,08						
1.1/4"	50,8	58,72	15,09						
1.1/2"	60,4	69,85	17,86						
2"	71,5	77,77	21,44						
2.1/2"	84,1	88,90	25,40						
3"	101,6	106,38	30,96						
3.1/2"	114,3	120,65	34,92						
4"	127,0	130,18	38,88						

SEMIFLANGE TAGLIATE 6000 psi (420bar)

Flangia	Ø Flang.	K	H						Codice
1/2"	31,8	40,49	9,12						
3/4"	41,3	50,80	11,91						
1"	47,6	57,15	13,89						
1.1/4"	54,0	66,68	15,88						
1.1/2"	63,5	79,38	18,26						
2"	79,4	96,82	22,23						

RONDELLA RAME METRICA-GAS

d	D	S						Codice
10,0	14,0	1,5						
10,0	16,0	1,5			1/8"			
12,0	18,0	1,5			1/4"			
13,5	19,0	1,5						
14,0	20,0	1,5						
16,0	22,0	1,5						
17,0	22,0	1,5			3/8"			
18,0	24,0	1,5						
20,0	26,0	1,5						
21,5	27,0	1,5			1/2"			
22,0	28,0	1,5						
24,0	30,0	1,5			5/8"			
26,0	32,0	1,5						
27,0	33,0	1,5			3/4"			
28,0	34,0	1,5						
30,0	36,0	1,5						
33,5	40,0	1,5			1"			
42,0	50,0	1,5			1.1/4"			
48,0	56,0	1,5			1.1/2"			
60,0	72,0	1,5			2"			

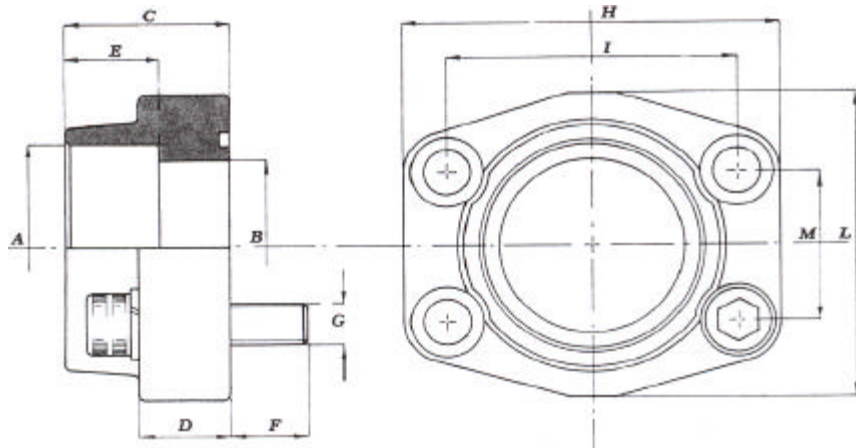


FLANGE FILETTATE 3000 psi (210bar)

P max (bar)	Codice	SAE 3000	Filetto A	B	C	D	E	F	G		H	I	L	M	OR
									Met.	UNC					
348	627CFS0801G	1/2	3/8	14	36	16	13	14	M 8	5/16	57	38,0	47	17,5	4075
348	627CFS0800G	1/2	1/2	14	36	16	15	14	M 8	5/16	57	38,0	47	17,5	4075
348	627CFS1001G	3/4	1/2	14	36	18	15	16	M10	3/8	66	47,6	49	22,2	4100
348	627CFS1000G	3/4	3/4	19	36	18	18	16	M10	3/8	66	47,6	49	22,2	4100
348	627CFS1021G	1	3/4	19	36	21	18	16	M10	3/8	71	52,4	53	26,2	4131
348	627CFS1020G	1	1	25	38	18	20	16	M10	3/8	71	52,4	53	26,2	4131
278	627CFS1041G	1 1/4	1	25	41	25	20	16	M10	3/8	80	58,7	69	30,2	4150
278	627CFS1040G	1 1/4	1 1/4	31	41	21	22	18	M10	3/8	80	58,7	69	30,2	4150
210	627CFS1061G	1 1/2	1 1/4	31	44	27	22	18	M12	1/2	94	70,0	77	35,7	4187
210	627CFS1060G	1 1/2	1 1/2	38	44	25	24	18	M12	1/2	94	70,0	77	35,7	4187
210	627CFS1081G	2	1 1/2	38	44	25	24	18	M12	1/2	103	77,8	89	42,9	4225
210	627CFS1080G	2	2	50	45	25	26	18	M12	1/2	103	77,8	89	42,9	4225
175	627CFS1101G	2 1/2	2	50	50	25	26	18	M12	1/2	115	89,0	101	50,8	4275
175	627CFS1100G	2 1/2	2 1/2	63	50	25	30	18	M12	1/2	115	89,0	101	50,8	4275
138	627CFS1121G	3	2 1/2	63	50	27	30	25	M16	5/8	135	106,4	124	62,0	4337
138	627CFS1120G	3	3	73	50	27	30	25	M16	5/8	135	106,4	124	62,0	4337
35	627CFS1141G	3 1/2	3	73	50	27	30	25	M16	5/8	152	120,7	136	70,0	4387
35	627CFS1140G	3 1/2	3 1/2	89	50	27	30	25	M16	5/8	152	120,7	136	70,0	4387
35	627CFS1161G	4	3 1/2	89	50	27	30	25	M16	5/8	162	130,0	146	77,8	4437
35	627CFS1160G	4	4	99	50	27	30	25	M16	5/8	162	130,0	146	77,8	4437
35	627CFS1180G	5	5	120	50	28	30	25	M16	5/8	184	152,4	180	92,0	4537

FLANGE FILETTATE 6000 psi (420bar)

P max (bar)	Codice	SAE 6000	Filetto A	B	C	D	E	F	G		H	I	L	M	OR
									Met.	UNC					
420	627CFS0400G	1/2	3/8	14	36	16	13	14	M 8	5/16	57	40,5	47	18,3	4075
420	627CFS0401G	1/2	1/2	14	36	16	15	14	M 8	5/16	57	40,5	47	18,3	4075
420	627CFS0401G1	3/4	1/2	14	36	19	18	16	M10	3/8	71	50,8	53	23,8	4100
420	627CFS0402G	3/4	3/4	19	36	19	18	16	M10	3/8	71	50,8	53	23,8	4100
420	627CFS0402G1	1	3/4	19	44	24	20	19	M12	7/16	80	57,1	69	27,8	4131
420	627CFS0403G	1	1	25	44	24	20	19	M12	7/16	80	57,1	69	27,8	4131
420	627CFS0403G1	1 1/4	1	25	44	27	22	22	M14	1/2	94	66,7	77	31,6	4150
420	627CFS0404G	1 1/4	1 1/4	31	44	27	22	22	M14	1/2	94	66,7	77	31,6	4150
420	627CFS0404G1	1 1/2	1 1/4	31	51	30	24	24	M16	5/8	106	79,4	89	36,7	4187
420	627CFS0405G	1 1/2	1 1/2	38	51	30	24	24	M16	5/8	106	79,4	89	36,7	4187
420	627CFS0405G1	2	1 1/2	38	58	37	33	32	M20	3/4	135	96,8	116	44,4	4225
420	627CFS0406G	2	2	50	58	37	33	32	M20	3/4	135	96,8	116	44,4	4225
420	627CFS0408G	2 1/2	2 1/2	63	75	45	35	35	M24	-	166	123,8	150	58,7	4275
420	627CFS0410G	3	3	73	90	55	40	55	M30	-	208	152,4	178	71,4	4337



FLANGE SALDARE 3000 psi (210bar)

P max (bar)	Codice	SAE 3000	A	B	C	D	E	F	G		H	I	L	M	OR
									Met.	UNC					
348	627CFS080S	3/8	17,5	14	36	16	18	14	M 8	5/16	57	38,0	47	17,5	4075
348	627CFS081S	1/2	21,6	14	36	16	18	14	M 8	5/16	57	38,0	47	17,5	4075
348	627CFS100S	3/4	27,2	19	36	18	18	16	M10	3/8	66	47,6	49	22,2	4100
348	627CFS102S	1	34,0	25	38	18	18	16	M10	3/8	70	52,4	53	26,2	4131
278	627CFS104S	1 1/4	42,8	31	41	21	20	18	M10	7/16	80	58,7	69	30,2	4150
210	627CFS106S	1 1/2	48,6	38	44	25	22	18	M12	1/2	94	70,0	77	35,7	4187
210	627CFS108S	2	61,0	50	45	25	24	18	M12	1/2	103	77,8	89	42,9	4225
175	627CFS110S	2 1/2	76,6	63	50	25	28	18	M12	1/2	115	89,0	101	50,8	4275
138	627CFS112S	3	90,5	73	50	27	28	25	M16	5/8	135	106,4	124	62,0	4337
35	627CFS114S	3 1/2	103,0	89	50	27	28	25	M16	5/8	153	120,7	137	70,0	4387
35	627CFS116S	4	115,5	99	50	27	28	25	M16	5/8	163	130,0	147	77,8	4437
35	627CFS118S	5	142,0	120	50	28	28	25	M16	5/8	184	152,4	180	92,0	4537

FLANGE SALDARE 6000 psi (420bar)

P max (bar)	Codice	SAE 6000	A	B	C	D	E	F	G		H	I	L	M	OR
									Met.	UNC					
420	627CFS400S	3/8	17,5	14	36	16	18	14	M 8	5/16	57	40,5	47	18,3	4075
420	627CFS401S	1/2	21,6	14	36	16	18	14	M 8	5/16	57	40,5	47	18,3	4075
420	627CFS402S	3/4	27,2	19	36	19	20	16	M10	3/8	71	50,8	53	23,8	4100
420	627CFS403S	1	34,0	25	44	24	22	19	M12	7/16	80	57,1	66	27,8	4131
420	627CFS404S	1 1/4	42,8	31	44	27	22	22	M14	1/2	94	66,7	77	31,6	4150
420	627CFS405S	1 1/2	48,6	38	51	30	24	24	M16	5/8	106	79,4	89	36,7	4187
420	627CFS406S	2	61,0	50	58	37	25	32	M20	3/4	135	96,8	116	44,4	4225
420	627CFS408S	2 1/2	76,6	63	75	45	28	35	M24	-	166	123,8	150	58,7	4275
420	627CFS410S	3	90,5	73	90	55	30	55	M30	-	208	152,4	178	71,4	4337